



Ministry of Health Uganda

Weekly Epidemiological Bulletin

Highlights of the week

Cholera outbreak continues in Sironko, crosses to Bulambuli and Bukedea districts

Summary Table

Indicator	Week 5 2016	Week 6 2016
% Districts	100	100
Ave % HU	78	67.6
% Timely reports	*	*
AFP	3(0)	3(0)
Animal bites	232(0)	187(0)
Cholera	29(1)	25(1)
Dysentery	1118(1)	725(1)
Guinea Worm	0(0)	0(0)
Malaria	220910 (69)	182968 (40)
Measles	78(0)	70(1)
Bacterial Meningitis	3(0)	3(0)
NNT	0(0)	0(0)
Plague	0(0)	0(0)
Typhoid	1931(13)	1473(6)
MDR TB	8(8)	12(0)

*Indicator not provided

Completeness of Reporting

In week 6 of 2016, much as all the 112 districts reported, a 10.4% decline from the previous week was noted. Average reporting rate was 67.6% and only 32 districts (29%) achieved the national target of $\geq 80\%$ of the health facilities reporting. Eight (8) districts had reporting rate of 100%, a 50 % drop as compared to the previous week. The regional level performance as well as best districts and worst districts in week 6 have been presented in **Figures 1, 2 & 3**.

Epidemiological Week 6 (1st – 7th Feb 2016)

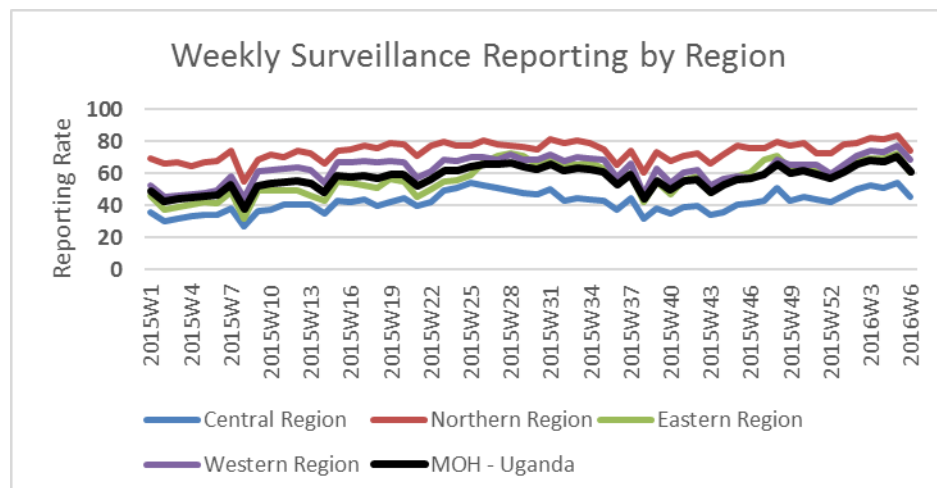


Figure 1: Average reporting level by region for weeks for Week 6 (1st – 7th Feb 2016)

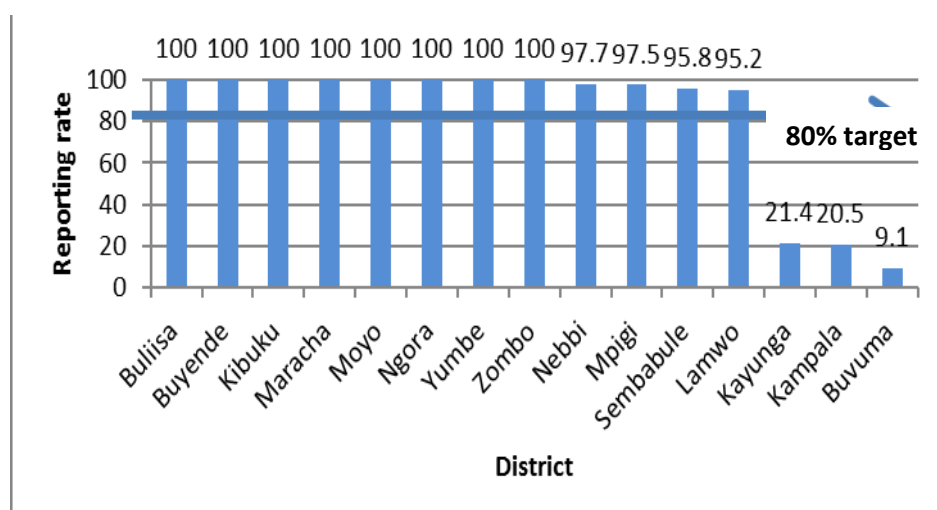


Figure 2: Top and Bottom districts reporting rates for Week 6 of 2016

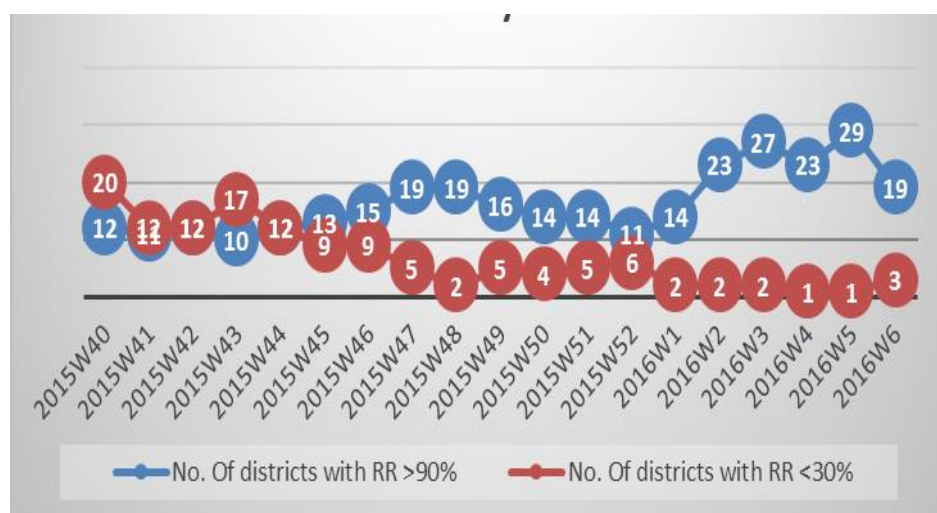


Figure 3: Trends of Top and Bottom reporting rate districts

Disease outbreaks

Cholera: The cholera outbreak has continued in Sironko district. Currently it has spread to neighboring Bulambuli and Bukedea districts. 25 cases of cholera were reported during this week: 22 cases in Sironko and 3 cases in Bulambuli districts, with one (1) death in Bukedea district. By 16th February 2016 a cumulative total of 120 suspected cases of cholera had been documented in Sironko districts with 5 deaths (case fatality rate of 4.2%).

Malaria: This week, 182,968 cases of malaria were reported, showing a 17% decrease from the previous week. Important to note however, is that this decline could be due a decline in the reporting rates. More still the epidemic districts in Northern Uganda remain above the respective Malaria normal channels. Among these districts, Gulu has continued to report the highest number of malaria cases 016.

Kasese district has consistently reported very high malaria cases of over 4000 since week 1 of 2016. Isingiro, Kasese, Iganga, Kamuli and Rakai district also reported over 4000 cases in this week.

Other priority diseases

AFP: Three (3) cases of AFP were reported from three districts of Mityana, Nakaseke and Buvuma. There were no AFP related deaths reported this week.

Typhoid fever: A total of 1495 cases of typhoid fever were reported in week 6 of 2016. Six (6) typhoid related deaths were reported in two districts of Kiboga (2 deaths) and Mbarara (1 death). Up to 26 districts reported more that the alert threshold of 20 typhoid cases per district.

Lyantonde and Ssembabule reported the highest typhoid attack rates of 35 and 26 per 100,000 as shown in **Figure 4** A below.

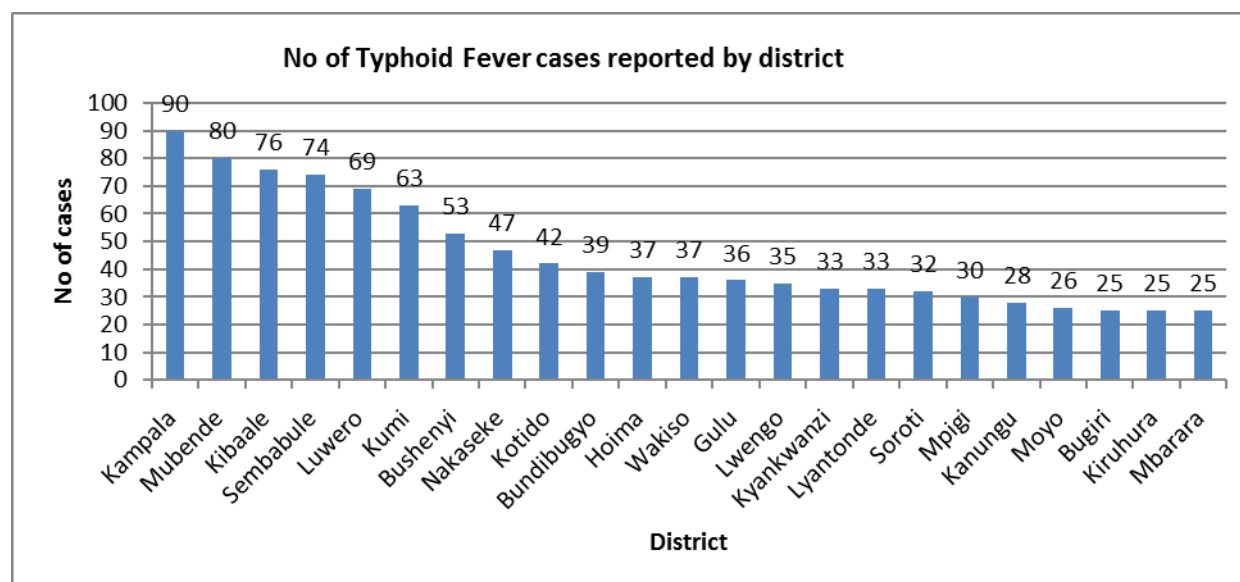


Figure 4: Districts reporting atleast 25 typhoid fever cases in week 6 of 2016

Measles: A total of 70 cases of measles were reported from 25 districts during this week, with one (1) measles reported deaths. Four districts (Kibaale, Mukono, Luweero and Kampala) reported measles cases above the set national threshold of 5 cases/district per month. Kibaale district had the highest measles attack rate as shown in **Figure 5 B** below. The overall number of districts that reported malaria cases above the outbreak threshold was three and these includes; Kibaale which reported (14 cases), Kampala (8 cases) and Luwero (6 cases).

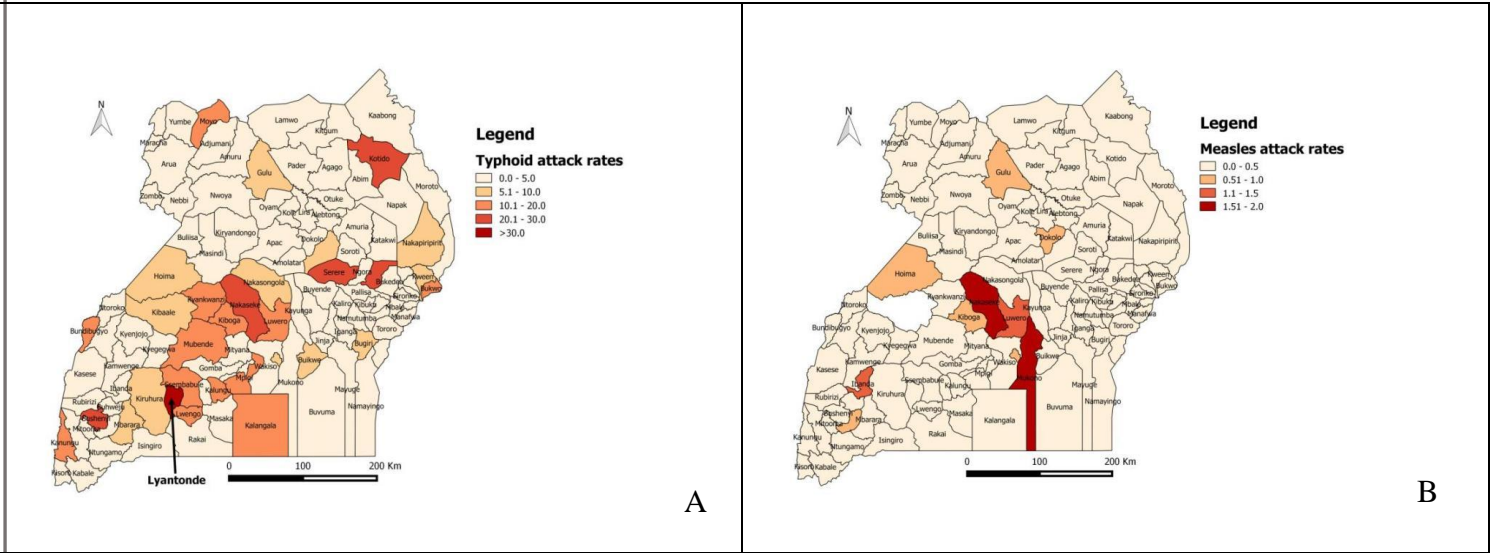


Figure 5: Maps showing Typhoid fever attack rates (Map A) and Measles attack rates (Map B) during week 6 of 2016

Neonatal Tetanus: No cases of neonatal tetanus (NNT) or NNT related deaths were reported during this week.

Maternal and perinatal deaths: Four (4) maternal deaths were reported from four (4) districts i.e. Adjumani, Hoima, Mubende and Kamuli. All facilities submitted the maternal audit forms. A total of 18 perinatal deaths were reported during this week from nine districts as shown in the table below.

Table 1: Maternal and perinatal deaths in week 6, 2016

District	Health facility	No of Maternal Deaths	No of Perinatal Deaths
Adjumani	Adjumani Hospital	1	4
Hoima	Hoima Regional Referral Hospital	1	2
Nebbi	Nebbi Hospital	0	2
Yumbe	Yumbe Hospital	0	1
Jinja	Jinja Regional Referral Hospital	0	3
Buikwe	Kawolo Hospital	0	1
Apac	Apac Hospital	0	1
Mubende	Mubende Regional Referral Hospital	1	2
Kamuli	Kamuli Mission Hospital	1	2

Figure 6: Table of health facilities reporting maternal deaths

International Health Event

Lassa fever Outbreak in Nigeria:

Nigeria battling fresh outbreak of deadly Lassa fever which has left 101 people dead since August 2015. Lassa fever is carried by rats. Nigeria Centre for Disease Control (NCDC) statistics show that reported cases of Lassa fever stood at 175 with a total of 101 deaths (case fatality rate 57.7%) from August 2015 to 6th February 2016.

While health authorities assure Africa's most populous country of more than 170 million that they have the virus disease under control, there are fears the actual scale of the outbreak is under-reported. The NCDC said officials have distributed large quantities of drugs, including Ribavirin tablets, and bottles of hand sanitizers across the country to tackle the disease. In neighbouring Benin at least 9 people have died in a Lassa outbreak, with a total of 20 suspected cases by 2nd February 2016.

The number of Lassa fever infections across West Africa every year is between 100 000 to 300 000, with about 5000 deaths. The virus belongs to the Arenaviridae family. It presents with fever, vomiting and in worse case scenarios, haemorrhagic bleeding. Lassa's name is from the town of Lassa in northern Nigeria where it was first identified in 1969. Endemic to the region, Lassa fever is asymptomatic in 80% of cases but for others it can cause internal bleeding, especially when diagnosed late. The virus is spread through contact with food or household items contaminated with rats' urine or faeces or after coming in direct contact with the bodily fluids of an infected person. Accessed on: <http://www.promedmail.org/>

Editorial: Dr. I. Nabukenya, Mr. J. Kissa, Dr C.Kihembo, Joyce Nguna, Dr. B. Masiira, , Dr. M. Musenero, Mr. M. Mugagga, Dr. J. Wamala, Dr. I. Makumbi , Dr. R. Musoke, Dr. J. Sekajugo, Dr. F. Adatu, Dr. C. Okot, Dr. M. Nanyunja

Founders: Dr. J. Kamugisha (RIP), Dr. J. Wanyana, Dr. M. Lamunu, Dr. C. Mugero, Dr. N Ndayimirigye, Mr. L. Luswa (RIP), Dr. N. Bakyaita, Mr. M. Mugagga

*For comments please contact: The Epidemiological Surveillance Division- M.O.H; P.O BOX 7272 Kampala, Tel: 0414-340874/0414-345108;
Email: esd@health.go.ug or esduganda@yahoo.co.uk*

Summary table for epidemiological reports received for Week 6 (1st – 7th Feb 2016)
(Numbers in brackets indicate deaths)

District	% HU reporting	AFP	AEIs	Animal Bites	Bacterial Meningitis	Cholera	Dysentery	Guinea Worm	Malaria	Measles	Neonatal Tetanus	Other Viral Haemorrhagic Fevers	Plague	Presumptive Multi-Drug Resistance (MDR) TB	Typhoid Fever	Yellow Fever
Abim	45	0	0	0	0	0	9	0	328	0	0	0	0	0	0	0
Adjumani	91.4	0	0	1	0	0	18	0	2685(1)	0	0	0	0	0	1	0
Agago	73.5	0	0	0	0	0	8	0	953	0	0	0	0	0	2	0
Alebtong	77.8	0	0	0	0	0	5	0	330	0	0	0	0	0	0	0
Amolatar	84.6	0	0	0	0	0	0	0	128	0	0	0	0	0	2	0
Amudat	50	0	0	0	0	0	4	0	197	0	0	0	0	0	0	0
Amuria	59	0	0	2	0	0	5	0	1,862	0	0	0	0	0	0	0
Amuru	65.6	0	0	3	0	0	20	0	1,904	0	0	0	0	0	1	0
Apac	59.5	0	0	0	0	0	1	0	2270(1)	0	0	0	0	0	0	0
Arua	68.5	0	0	1	1(1)	0	15	0	2,797	0	0	0	0	0	19	0
Budaka	93.3	0	0	0	0	0	3	0	966	0	0	0	0	0	3	0
Bududa	73.3	0	0	1	0	0	13	0	968	0	0	0	0	0	3	0
Bugiri	64	0	0	2	0	0	10	0	1,875	1	0	0	0	0	25	0
Buhweju	70.6	0	0	0	0	0	0	0	224	0	0	0	0	0	0	0
Buikwe	50.9	0	0	0	0	0	3	0	1,329	0	0	0	0	0	23	0
Bukedea	81.3	0	0	1	0	0(1)	8	0	1,294	0	0	0	0	0	6	0
Bukomansimbi	58.8	0	0	0	0	0	1	0	522	0	0	0	0	0	0	0
Bukwo	81.3	0	0	6	0	0	19	0	133	0	0	0	0	0	9	0
Bulambuli	89.5	0	0	0	0	3(0)	0	0	1,303	0	0	0	0	0	0	0
Buliisa	100	0	0	0	0	0	5	0	337	0	0	0	0	0	2	0
Bundibugyo	86.7	0	0	0	0	0	8	0	1,584	0	0	0	0	0	39	0
Bushenyi	92.3	0	0	6	0	0	1	0	1805(1)	0	0	0	0	0	53	0
Busia	51.7	0	0	0	0	0	5	0	2,132	0	0	0	0	0	2	0
Butaleja	58.3	0	0	0	0	0	3	0	502	0	0	0	0	0	1	0
Butambala	56.5	0	0	0	0	0	2	0	558	0	0	0	0	0	2	0
Buvuma	9.1	1	0	0	0	0	1	0	144	0	0	0	0	0	0	0
Buyende	100	0	0	1	0	0	7	0	1,565	0	0	0	0	0	0	0
Dokolo	93.8	0	0	0	0	0	10	0	737	1	0	0	0	0	6	0
Gomba	94.7	0	0	0	0	0	0	0	1,147	0	0	0	0	0	3	0
Gulu	69.8	0	0	1	0	0	41	0	6,808	3	0	0	0	1(0)	36	0
Hoima	42.4	0	0	3	0	0	28	0	1966(9)	4	0	0	0	0	37	0
Ibanda	70	0	0	6	0	0	1	0	2,232	3	0	0	0	0	0	0
Iganga	60.7	0	0	0	0	0	4	0	4,126	1	0	0	0	0	1	0
Isingiro	78.6	0	0	0	0	0	2	0	5,012	0	0	0	0	0	13	0
Jinja	48.7	0	0	5	0	0	7	0	3101(4)	0	0	0	0	0	22	0
Kaabong	48.1	0	0	4	0	0	7	0	822	0	0	0	0	0	0	0
Kabale	77.1	0	0	5	0	0	0	0	456	0	0	0	0	0	0	0
Kabarole	50.7	0	0	5	0	0	3	0	1,602	0	0	0	0	9(0)	16	0
Kaberamaido	80	0	0	0	0	0	3	0	793	0	0	0	0	0	14	0
Kalangala	41.2	0	0	1	0	0	3	0	78	0	0	0	0	0	10	0

Kaliro	38.1	0	0	0	0	0	0	0	1,700	0	0	0	0	0	0	0
Kalungu	58.6	0	0	1	0	0	0	0	641	0	0	0	0	0	24	0
Kampala	20.5	0	0	1	0	0	5	0	1,258	10	0	0	0	0	90	0
Kamuli	30.5	0	0	5	0	0	3	0	3271(5)	1	0	0	0	0	4	0
Kamwenge	54.3	0	0	2	0	0	3	0	1877(1)	0	0	0	0	0	9	0
Kanungu	87.5	0	0	1	0	0	4	0	823	0	0	0	0	0	28	0
Kapchorwa	70	0	0	0	0	0	1	0	375	0	0	0	0	0	1	0
Kasese	77.1	0	0	2	0	0	9	0	3838(1)	0	0	0	0	0	9	0
Katakwi	76.9	0	0	0	0	0	0	0	1,577	0	0	0	0	0	2	0
Kayunga	21.4	0	0	1	0	0	8	0	1,085	0	0	0	0	0	6	0
Kibaale	62	0	0	2	0	0	8	1	2,504	14	0	0	0	1(0)	76	0
Kiboga	60	0	0	0	0	0	0	0	580	1	0	0	0	0	15(5)	0
Kibuku	100	0	0	0	0	0	3	0	743	0	0	0	0	0	2	0
Kiruhura	76.7	0	0	2	0	0	2	0	3,294	1	0	0	0	0	25	0
Kiryandongo	57.7	0	0	2	1	0	6	0	1,349	0	0	0	0	0	8	0
Kisoro	84.2	0	0	2	0	0	0	0	278	0	0	0	0	0	5	0
Kitgum	53.6	0	0	1	0	0	17	0	1,614	0	0	0	0	0	3	0
Koboko	87.5	0	0	1	0	0	2	0	1,318	0	0	0	0	0	0	0
Kole	90.9	0	0	1	0	0	0	0	1,443	0	0	0	0	0	0	0
Kotido	36.8	0	0	0	0	0	29	0	405	0	0	0	0	0	42	0
Kumi	70.4	0	0	1	0	0	2	0	2,507	1	0	0	0	0	63	0
Kween	70.8	0	0	0	0	0	4	0	640	0	0	0	0	0	9	0
Kyankwanzi	72	0	0	0	0	0	4	0	1,068	0	0	0	0	0	33	0
Kyegegwa	86.7	0	0	0	0	0	0	0	1,125	0	0	0	0	0	1	0
Kyenjojo	55.3	0	0	2	0	0	4	0	1,419	1	0	0	0	0	5	0
Lamwo	95.2	0	0	0	0	0	4	0	1,831	0	0	0	0	0	0	0
Lira	65.6	0	0	3	0	0	8	0	1,575	0	0	0	0	0	16	0
Luuka	48.4	0	0	0	0	0	0	0	1,985	0	0	0	0	0	0	0
Luwero	66.2	0	0	2	0	0	1	0	1,389	5	0	0	0	0	69	0
Lwengo	74.2	0	0	0	0	0	6	0	9,311	0	0	0	0	0	35	0
Lyantonde	50	0	0	2	0	0	4	0	1,796	0	0	0	0	0	33	0
Manafwa	58.3	0	0	0	0	0	1	0	1,460	0	0	0	0	0	14	0
Maracha	100	0	0	4	0	0	7	0	1,533	0	0	0	0	0	9	0
Masaka	46.2	0	0	0	0	0	1	0	649	0	0	0	0	0	0	0
Masindi	67.4	0	0	2	0	0	7	0	1,127	0	0	0	0	0	3	0
Mayuge	47.8	0	0	1	0	0	13	0	2,597	0	0	0	0	0	3	0
Mbale	60	0	0	0	0	0	2	0	1,644	0	0	0	0	0	13	0
Mbarara	61.8	0	0	1	0	0	5	0	1,357	1	0	0	0	0	25(1)	0
Mitooma	91.7	0	0	4	0	0	0	0	1,699	0	0	0	0	0	6	0
Mityana	52.5	1	0	9	0	0	5	0	2442(2)	1(1)	0	0	0	0	2	0
Moroto	40	0	0	8	0	0	7	0	745(1)	0	0	0	0	0	4	0
Moyo	100	0	0	0	0	0	23	0	3,170	0	0	0	0	0	26	0
Mpigi	97.5	0	0	0	0	0	2	0	1,248	0	0	0	0	0	30	0
Mubende	51.9	0	0	4	0	0	10	0	2970(1)	2	0	0	0	0	80	0
Mukono	63.3	0	0	1	0	0	15	0	2,241	9	0	0	0	0	14	0
Nakapiripirit	70.6	0	0	0	0	0	24	0	1366	0	0	0	0	0	13	0
Nakaseke	83.3	1	0	4	0	0	4	0	1,252	3	0	0	0	0	47	0
Nakasongola	37.1	0	0	1	0	0	1	0	484	0	0	0	0	0	11	0
Namayingo	31.3	0	0	0	0	0	2	0	1,246	1	0	0	0	0	3	0

Namutumba	55.9	0	0	1	0	0	4	0	1,934	0	0	0	0	0	4	0
Napak	78.6	0	0	2	0	0	15	0	902	0	0	0	0	1(0)	0	0
Nebbi	97.7	0	0	10	0	0	32	0	3177(2)	1	0	0	0	0	11	0
Ngora	100	0	0	1	0	0	9	0	1,013	0	0	0	0	0	1	0
Ntoroko	77.8	0	0	0	0	0	2	0	260	0	0	0	0	0	3	0
Ntungamo	77.3	0	0	0	0	0	0	0	1,471	0	0	0	0	0	0	0
Nwoya	77.8	0	0	0	0	0	0	0	1,357	0	0	0	0	0	0	0
Otuke	73.3	0	0	1	0	0	7	0	357(2)	0	0	0	0	0	0	0
Oyam	83.9	0	0	17	0	0	11	0	2,842	0	0	0	0	0	3	0
Pader	59	0	0	1	0	0	23	0	1,949	0	0	0	0	0	8	0
Pallisa	39.4	0	0	0	0	0	2	0	1029(2)	0	0	0	0	0	4	0
Rakai	44.9	0	0	0	0	0	2	0	2,337	1	0	0	0	0	3	0
Rubirizi	78.9	0	0	0	0	0	3	0	708	0	0	0	0	0	0	0
Rukungiri	48.3	0	0	9	0	0	3	0	757	1	0	0	0	0	4	0
Sembabule	95.8	0	0	2	0	0	2	0	3,039	0	0	0	0	0	74	0
Serere	71.4	0	0	3	0	0	5	0	1,495	2	0	11	0	0	1	0
Sheema	82.4	0	0	0	0	0	0	0	1,065	0	0	0	0	0	0	0
Sironko	63.3	0	0	0	0	22(0)	3	0	2,121	0	0	0	0	0	0	0
Soroti	58.3	0	0	1	0	0	10	0	3608(1)	0	0	0	0	0	32	3
Tororo	69.4	0	0	5	0	0	7	0	1,974	0	0	0	0	0	13	0
Wakiso	35.5	0	0	0	0	0	13	0	2,467	1	0	0	0	0	37	0
Yumbe	100	0	0	4	1	0	9	0	2,214	0	0	0	0	0	5	0
Zombo	100	0	0	3	0	0	14	0	1,468	0	0	0	0	0	3	0
National	67.6	3(0)	0	187(0)	2(0)	25(1)	725(1)	0	182968(40)	70(1)	0	11	0	12	1473(6)	3

Key: Yellow: 100% reporting, Green: 80-99% reporting, Red: Below 80% reporting

HU= Health Units, AFP=Acute Flaccid Paralysis, AEIs: Adverse Events following Immunization, NNT=Neonatal Tetanus, MDR: Multi-Drug Resistance, NR =Not Reported

Compiled by the Epidemiological Surveillance Division, Ministry of Health